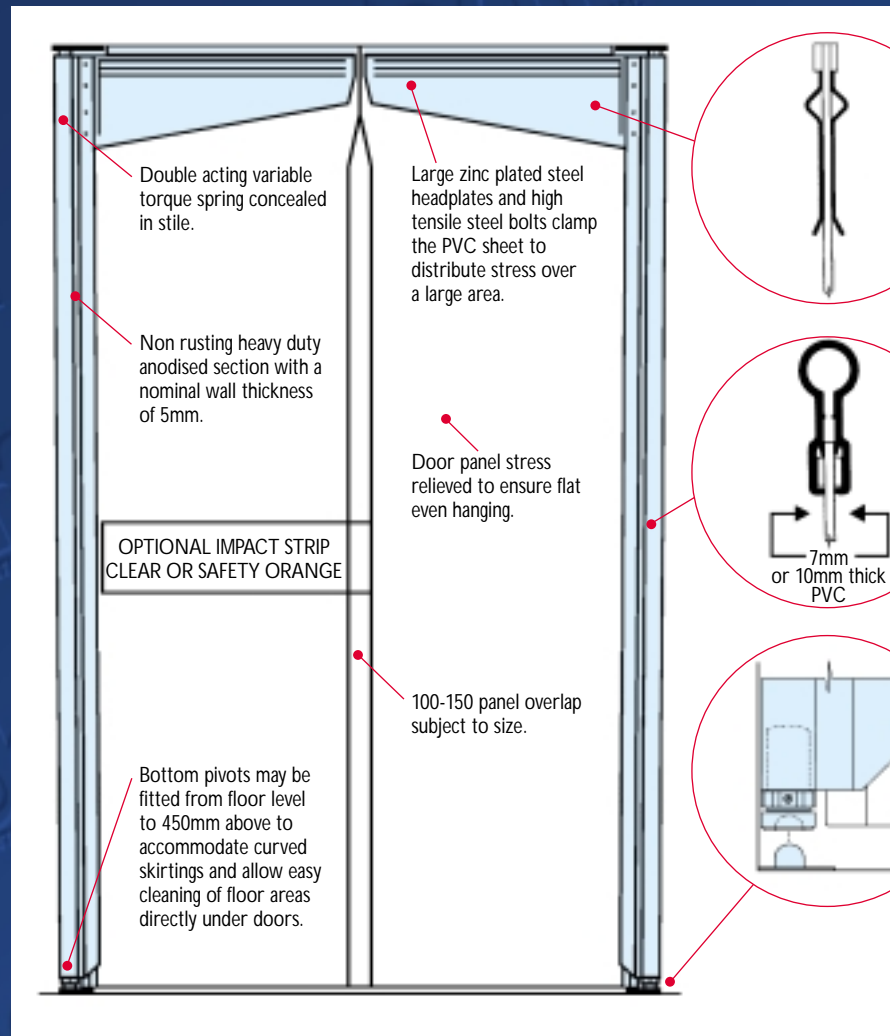


SWINGFLEX DOOR MK6

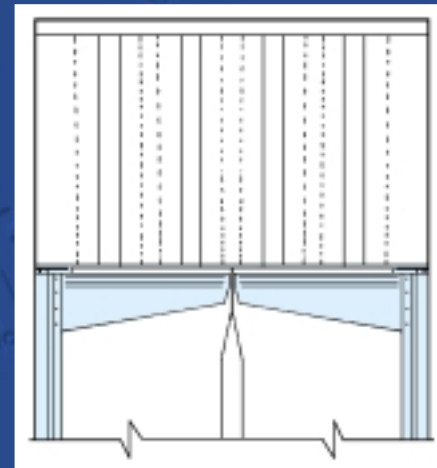
There's a Nagi-Ho solution to suit every doorway problem!



IMPORTANT DESIGN STANDARDS FOR ALL FLEXIBLE DOORS.

To enhance the life of any impact operated flexible doors it is strongly recommended that, where mechanical or hand operated traffic is used, door opening should be approximately 10% higher and 30% wider than the size of equipment passing through the opening.

FOR OPENINGS LARGER THAN STANDARD.



Door openings with a height in excess of 3000mm, transome flaps can be fitted above the doors. Where the width exceeds 3000mm wide, a dual spring model is recommended.

DESIGN FEATURES OF YOUR SWINGFLEX® DOOR MK6.

Heavy duty zinc plated steel head plates and high tensile steel bolts, clamp the PVC sheet to distribute the stress over a large area.

PVC retaining seams are integrally welded to the top edge, and sealed on top of the head plates to prevent any possible sagging of the PVC.

Also formed in the head plates is an anti-tear flair at the bottom edge and a projected forming to act as a skid bar on accidental impact.

Vertical stiles of strong extruded aluminium section, and anodised for extra protection and appearances. The PVC sheet, either 7mm or 10mm in thickness, is held in place by two full length welded seams captivated in the extruded stile.

The unique hemispherical bottom support pivot enables easy installation. Even with misaligned floors or door jambs, it guarantees effortless opening. The adjustable jack located in the stile is used to correct the door height after installation.

SWINGFLEX DOORS

The double acting door you can rely on...

Your Nagi-Ho doors are engineered to withstand the toughest punishment so you will benefit in savings on costly down time and repairs. AND you have a choice to suit your exacting needs.

Swingflex® Model MK5

PEDESTRIAN AND LIGHT VEHICULAR ACCESS DOORS.

The MK5 range is your perfect answer for all your pedestrian and light vehicle doorways, manufactured to your exacting requirements from unique, cost efficient, modular componentry.

EASY DOOR SELECTION.

Swingflex® MK5 doors are suitable for openings up to 2500mm high and 1800mm wide for double door arrangements. With the inclusion of reinforcing gussets, doors can be increased in size to 3000mm high x 2200mm wide.

EFFECTIVE ENVIRONMENT BARRIER.

Because of the standard twin blade brush seals, to the back edge of the door frame, the Swingflex® MK5 is one of the most efficient doors available against draughts, wind, noise, heat, cold, dust, fumes and insects.

Using special grade PVC, doors can be used as ante doors in freezer application.



Visit our website www.flatpackkitchens.com



Nagi-Ho Head Office
Unit 11/57B Saints Road, Salisbury Plain SA 5109 Australia
Tel. +61 8 8285 6385 Fax. +61 8 8285 6385
Agents in all Australian States, New Zealand, Singapore, Philippines, Malaysia, Hong Kong, Indonesia, Sth Korea, China and India.

Your local distributor:



Since 2000, Nagi-Ho Pty Ltd has been creating only the best door systems for all Australian and overseas markets. The Swingflex door continues this great tradition.

SWINGFLEX DOOR MK5

There's a Nagi-Ho solution to suit every doorway problem!

Swingflex® Model MK5

EASY CARE DESIGN.

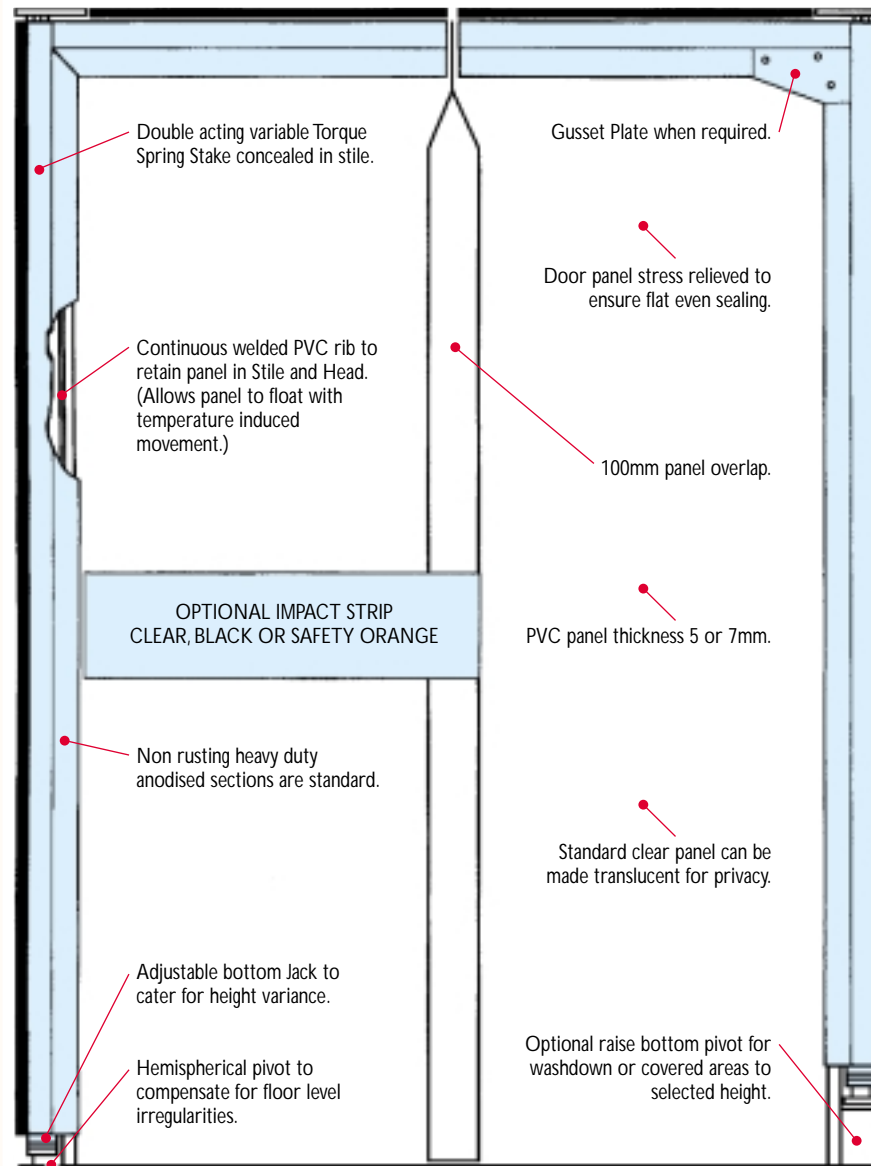
All parts can be quickly and economically replaced, using standard sized stock components, and should the PVC be damaged, it is easily repaired. Normal care consists of occasional washing with suitable detergent.

STRONG ALUMINIUM EXTRUSION.

This unique, multi-purpose profile is utilised for both the stile and the head, and to retain the spring mechanism and bottom pivot. Continuous grooves retain the sealing strip and PVC panel over their entire length. All sections have a tough anodised finish for attractive appearances and extra protection.

EFFECTIVE DUST SEALING.

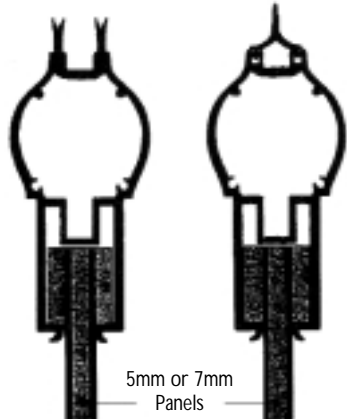
To provide more efficient sealing between the door frame and jambs, DMF Swingflex MK5 doors incorporate a brush or PVC seal strip, neatly located in a groove along the back of both the stile and head profiles.



THE UNIQUE DMF SWINGFLEX MK5 DOORS PROUDLY CARRY AN AUSTRALIAN REGISTERED DESIGN No. 101134 AND IN NEW ZEALAND 21796.

FIBRE BRUSH SEALS
for general smoke/draught/dust control

PVC SEALS
for wash down and food/hygiene areas



COLOURED PANELS.

New and exclusive to DMF is the option of coloured panel, to half or full height.



FINISHES.

Powdercoating and sign writing to suit your special requirements.



SWINGFLEX DOOR MK6

There's a Nagi-Ho solution to suit every doorway problem!

The MK6 selection is clearly your most flexible solution to a heavy duty impact door for openings used by motorised forklifts. Manufactured to your requirement, from cost effective modular componentry.

Swingflex® Model MK6

DOOR SELECTION.

Swingflex® door model MK6 is a heavy duty unit designed for motorised traffic. The recommended size range from 2400mm to 3600mm in height and 2000mm to 3000mm width. Higher openings can be accommodated by adopting a flexible transome flap above.

DOOR SELECTION.

The MK6 Swingflex® door handles motorised forklifts safely. With the see through panels, drivers can foresee any danger right from their driving position. The PVC panel flexes on impact from the forklift or pallet load, the door opens, and the vehicle passes effectively through the opening.

FEATURES OF YOUR SWINGFLEX® DOOR.

- See through panels means safe two way traffic flow.
- Hands free operation, door opens with a gentle push and closes automatically behind you.
- Silent operation by flexible PVC panels absorbing any impact during opening and closing.
- Concealed spring controls, fully adjustable to suit your requirement.
- Doors are manufactured to clinical requirements as standard.
- Hold open controls are available if required.
- All PVC used is non toxic and contains no heavy base metals, such as cadmium, lead or barium.

